

Sawadi School



Earthquake Monitoring Station - Sultan Qaboos University



Oman Aviation Academy



Date d'installation 2022

Application Defense

Pays Oman

Ville Sohar

Installateur / Prestataire Al Dahirah Star Trading LLC

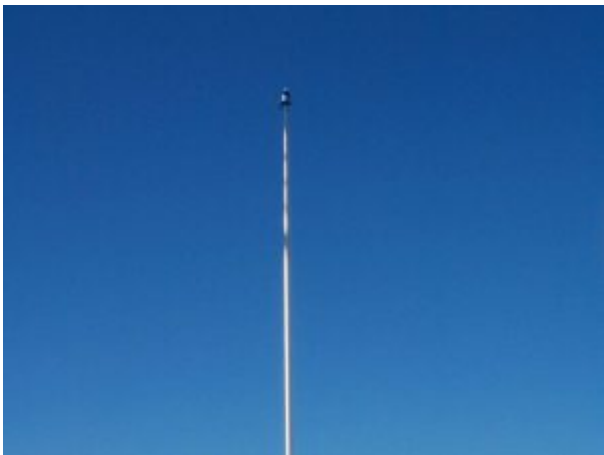
Ministry of Education (MOE) Supervision Office



Al Sahwa School



Residential & Commercial



Various School



Sahwa Private School



Sri Lankan School Muscat



Residential and Commercial Building



RAECO Rural Areas Electricity Company



Muscat Hills Boulevard



Intercity Hotel



Indian School (Extension) Al Ghubra



Hypermarket



Autism Center



Al Khuwair Commercial Building



Al Sathea School



Al Rakha Dev. School



Car Park Building



Muscat Hills Pearl Muscat



Sarooj Commercial Building

Sohar International Urea & Chemical Industries



School



Mutahibi School



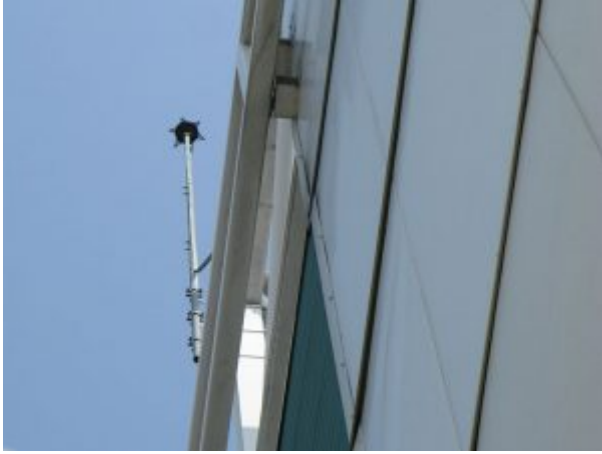
Various School



School



Ghala Sports Complex



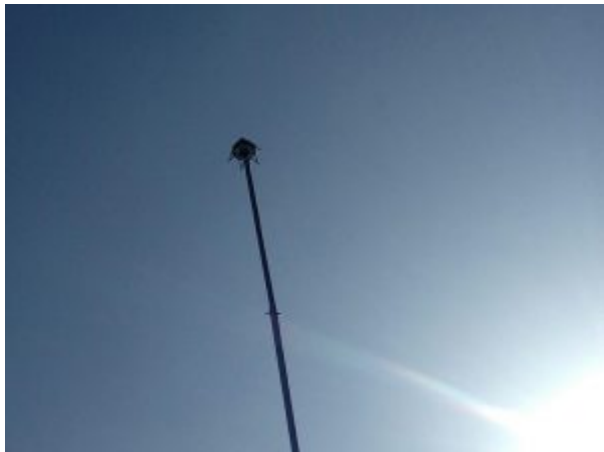
W Hotel



Sandan Industrial Camp



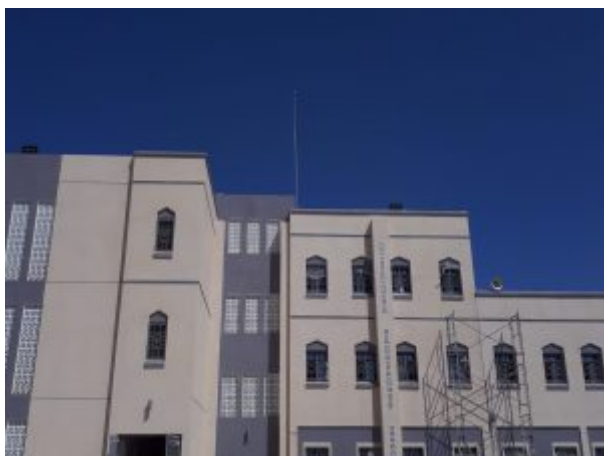
Sultan's Special Force (SSF) - Ministry of Defense (MOD)



Said School



School



School



School



School



School



School



School



School



Ruwi Tower Complex



Oman Plastic Factory



Oman LNG Hay Al Sharooq International School



Johainna Private Villa



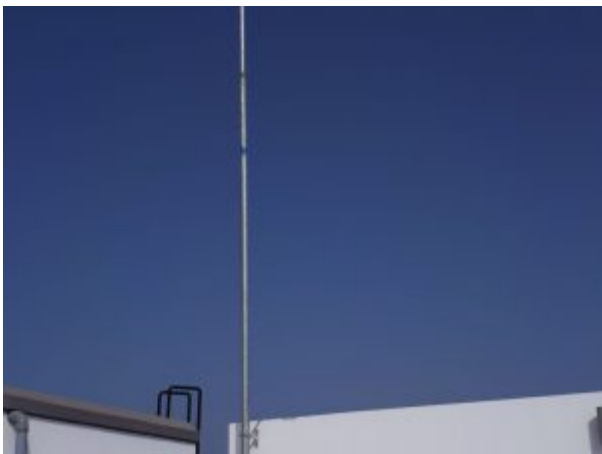
Jebel Sifah Golf Laka Apartments



School



Boys School



School



School



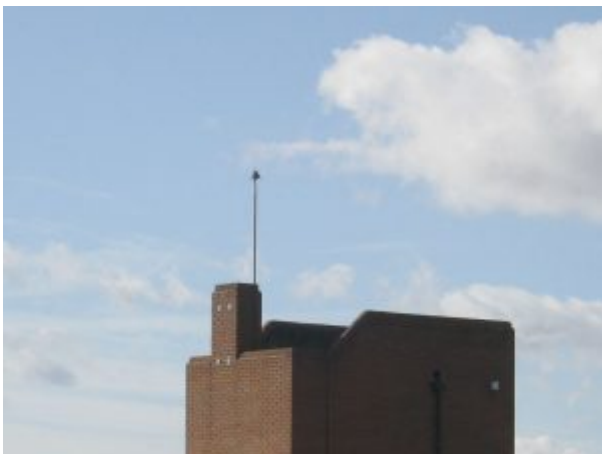
Girls School



Al School



Ghala Height Commercial



8 x Schools in Batinah Region



Al Khuwair - Silver Shell Trading & Construction LLC



Office Building



Commercial Building



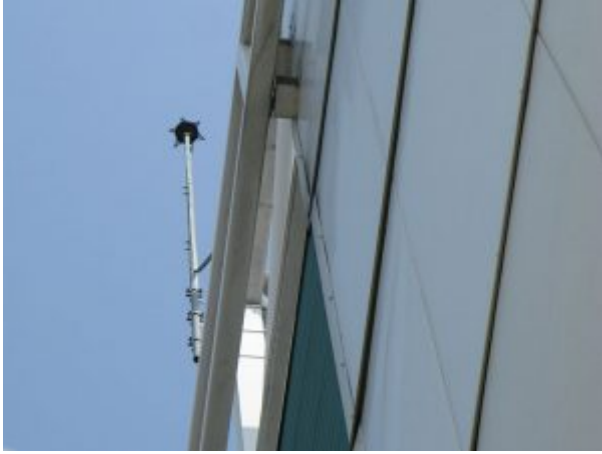
ABS School Al Khoudh



Dog Kennel



Salalah Indra Project



Al Haythem Villa



Royal Guard of Oman (RGO) Al Husn Mess

PREVECTRON 3[®]

8 x Schools in Batinah Region



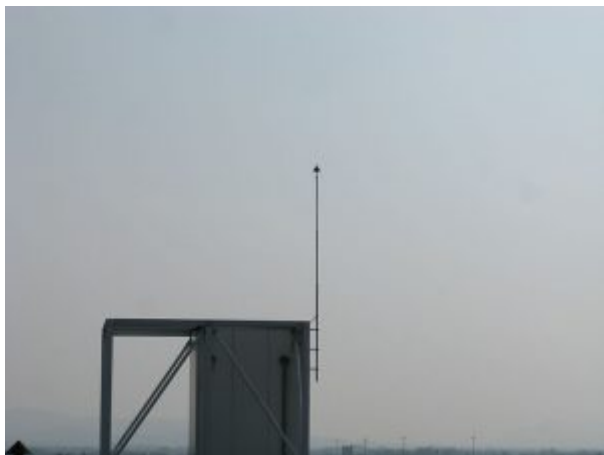
Royal Guard of Oman (RGO) Halban Camp



Royal Guard of Oman (RGO) HQ



Al Muna Heights



Oman Charity Organisation



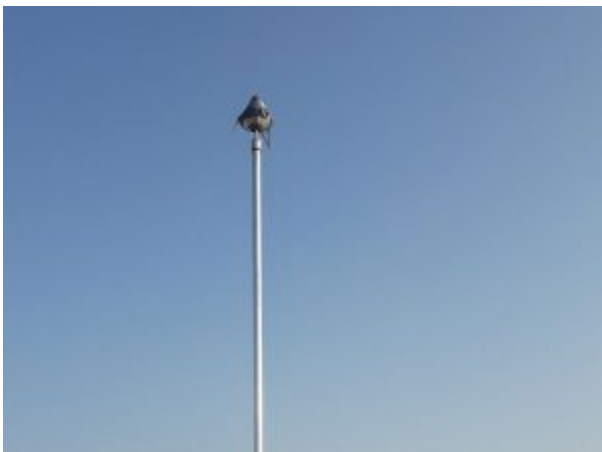
The Cave Restaurant



Raha Accomodation



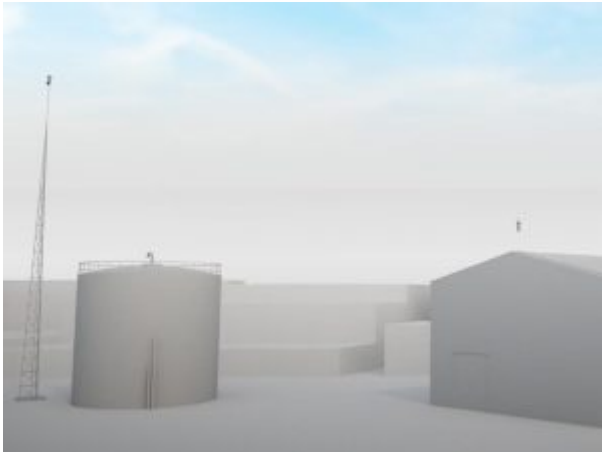
Royal Guard of Oman (RGO) Al Aman Camp



Metal Recovery Plant

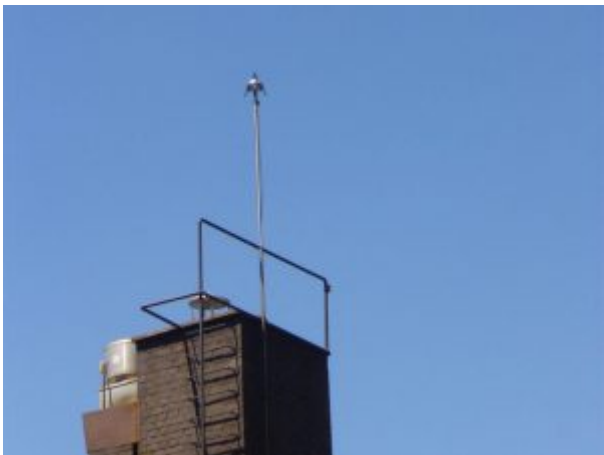


Shati Mosque



Festival Hall Nizwa





Salalah Shopping Mall



School / SANDROSE Trading LLC



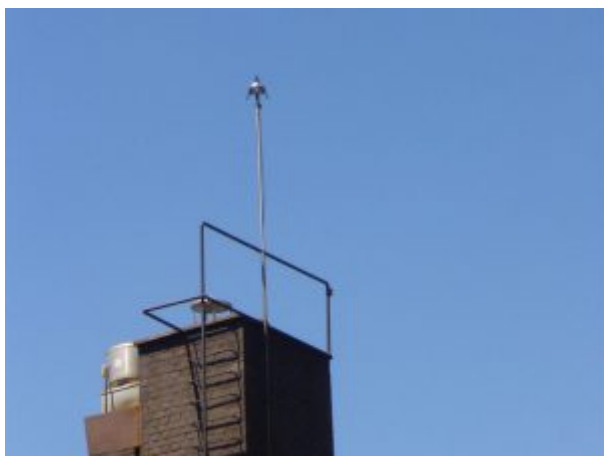
Building for Ministry of Justice



3 Floor office Facility & Other service building / Advance Engineering LLC



Logistics Facilities / Al Araab Engineering LLC



Sultan's Special Force (SSF) / Steel Buildings LLC



Commercial & Residential / Ghantoot



MC1 Data Centre / Cube LLC



J140 Commercial Building Al Azhaiba / Atlantic Construction



J137 Commercial and Residential Bu Haleeba / Atlantic Construction



Oman Aviation Academy / Dawood Contracting LLC



Al Sahwa Schools / MPI Construction

